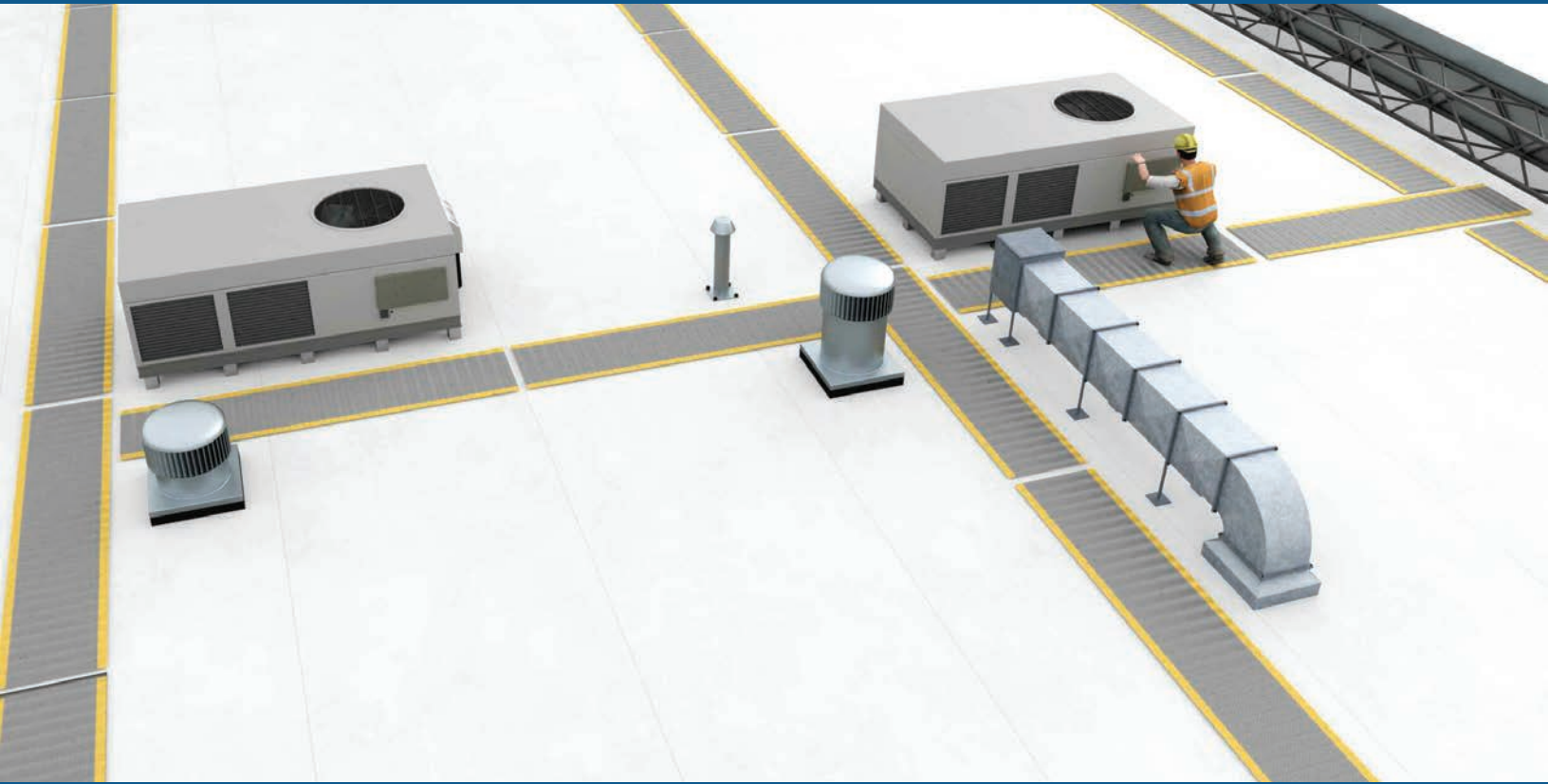


Tuff Trac® TPO Roof Walkway

Herringbone Embossed Pattern

BILTRITE®
THERMOPLASTICS



Tuff Trac® TPO roof walkway is widely used throughout the US and Canada and is made in the USA.

Safe Pathway & Long Lasting Protection for Roof Membranes

Tuff Trac® TPO roof walkway creates a positive traffic control path to prevent damage to the roof membrane from frequent rooftop traffic. Our walkway is engineered for outdoor use and manufactured with 55% recycled content (LEED contributing). The key advantage of Tuff Trac® TPO roof walkway is that the fibrous mixture of our in-house blended Tuff Trac® TPO roof walkway does not expand and contract like non-reinforced walkway. In addition, this product can be designed with innovative safety edge technology.

Easy Rooftop Application

Tuff Trac® TPO heat weld walkway is recommended for mechanically fastened single-ply roofs and can easily be installed on new and existing roofs by using standard hot air heat weld equipment.

Tuff Trac® TPO roof walkway is recommended for protection of TPO roof membrane in areas subjected to frequent foot traffic or maintenance.

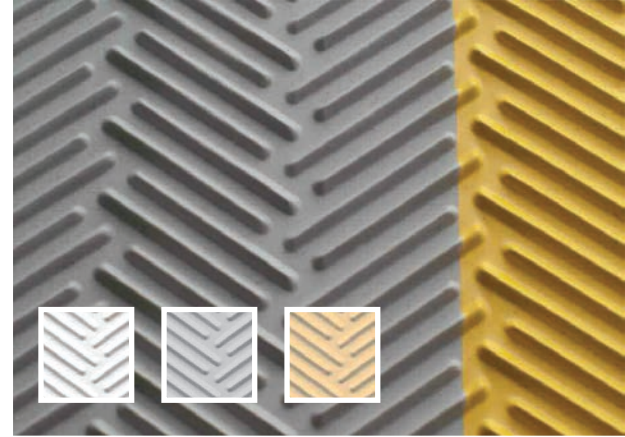
Intended Uses

Tuff Trac® TPO roof walkways are frequently used for:

- All access points to the roof
- Protection near window washing equipment
- Around rooftop equipment that requires periodic maintenance

Installation

- Remove any loose debris and clean TPO roof membrane and allow to dry prior to application of walkway
- Roll out and cut desired length up to 10' (3.05 m) and allow to relax while placing into the desired position
- Install Tuff Trac® TPO roof walkway with a continuous weld around the perimeter



Available in White, Gray & Tan.
(Edge borders can be added in Safety-Yellow as a special order.)

Tuff Trac® TPO Herringbone Embossed Pattern specifications – Item #67-6720-53 (Gray), 67-6720-61 (White), 67-6720-70 (Tan)

PACKAGING:

Roll Size:	30" wide x 50' long (76 cm x 15.2 m)
Roll Weight:	78 lbs. (35 kg)
Color:	Gray, White, Tan
Thickness, in (mm):	0.156" +/- 0.10" (4 mm +/- 0.025 mm)

STANDARD AND METRIC SPECIFICATION

TEST DESCRIPTION	TEST METHOD	RM BILTRITE™ SPECIFICATION
Thickness, in (mm):	ASTM D 412	0.156" +/- 0.10" (4 mm +/- 0.025 mm)
Tear Resistance, lbf/in (kN/m):	ASTM D 624	200 PPI (43.8 kN/m)
Elongation:	ASTM D 412	200%
Dimensional Stability:	ASTM D 1204 (2hr, 158°F)	0 +/- 0.5%
Accelerated Weathering:	ASTM G 155	10,080 kj/m²

LEED INFORMATION:

Pre-Consumer Recycled Content	55%
Manufacturing Location:	Chelsea, MA
Rev. April 2013	

Made in the USA by RM Biltrite™ LLC, a leading US manufacturer of engineered thermoplastic products including: building materials, specialty flooring and matting, noise attenuation, gasketing and other products with complex technical requirements.

For more information and samples, contact your local distributor or a RM Biltrite™ representative at (800) 877-8775.



© RM Biltrite, LLC 2018

The following are trademarks of RM Biltrite, LLC: RMBiltrite™, Biltrite®, Tuff Trac®

The following are trademarks of QRR, Inc: RubberMax™

There may be other trademarks of RM Biltrite or other companies noted in this document.

Distributed by: