

RM Biltrite™ Flexgard® Rubber Switchboard Matting is designed to insulate and protect workers against electrical shock from high voltage devices and environments. All switchboard matting conforms to ASTM D178 testing standards and come with ASTM testing results permanently imprinted on the back. RM Biltrite™ Switchboard Matting is available in the following:

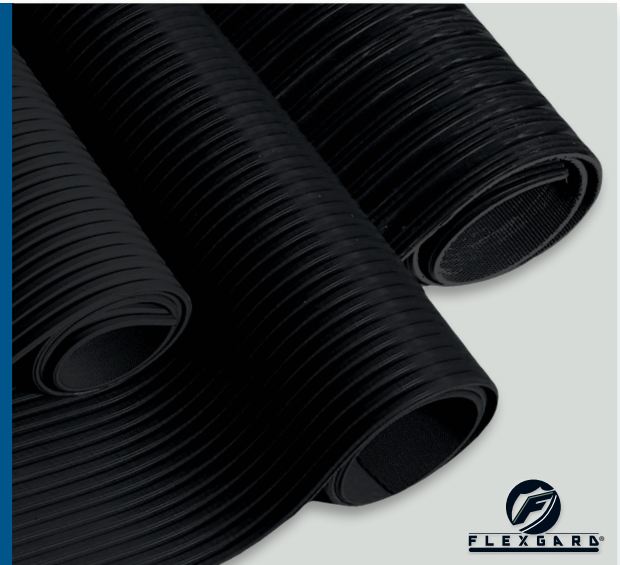
Type 1: Fully vulcanized elastomer material

Type 2: Ozone resistant, flame resistant, and oil resistant elastomer material

Class 1: Proof tested at 10,000 volts AC with a recommended maximum voltage exposure of 7,500 volts AC

Class 2: Proof tested at 20,000 volts AC with a recommended maximum voltage exposure of 17,000 volts AC and dielectric strength of 30,000 volts AC.

Applications: Electrical shops, control panels, switchboards, heavy machinery, electrical plants, fuse boxes, transformers, high voltage areas.



STYLE #160: FLEXGARD® TYPE 1, CLASS 1 AND CLASS 2

Item ID	Durometer Hardness	Tensile Strength (min)		Elongation	Temperature Range		Color	Top Finish	Bottom Finish
	Shore A (± 5)	psi	MPa	% (min)	°F	°C			
IR160-70	65	717	4.9	250	-22 - +176	-30 - +80	Black	Ribbed	Smooth or Fabric

STYLE #165: FLEXGARD® TYPE 2, CLASS 1 AND 2

Item ID	Durometer Hardness	Tensile Strength (min)		Elongation	Volume Swell 24 Hours in IRM Oil No. 2	Flame Resistance after 30 Seconds	Temperature Range		Color	Top Finish	Bottom Finish
	Shore A (± 5)	psi	MPa	% (min)	% (max)	in	°F	°C			
IR165-80	82	688	4.7	250	40	0.5"	-22 - +212	-30 - +100	Black	Ribbed	Smooth or Fabric

CLASS 1 ROLL DIMENSIONS

Units	Widths				Thicknesses
U.S.	24"	30"	36"	48"	3/16"
Metric	60.9 cm	76.2 cm	91.4 cm	121.9 cm	4.8 mm

Custom sizes available upon request

CLASS 2 ROLL DIMENSIONS

Units	Widths				Thicknesses
U.S.	24"	30"	36"	48"	1/4"
Metric	60.9 cm	76.2 cm	91.4 cm	121.9 cm	6.4 mm

Custom sizes available upon request

RM Biltrite™ · P: 800.877.8775 · F: 888.894.0204 · sales@rmbiltrite.com · www.rmbiltrite.com · 8525 Dunwoody Pl · Sandy Springs, GA 30350

Typical Physical Properties: Per ASTM D300, Section 7.1, Buyer agrees that when standard test specimens are cut from finished parts in accordance with Practice D3183, a deviation to the extent of 10% on tensile strength and elongation values is permissible. All of our thermoplastic products are a proprietary blend of plastics and other components. In any application, the customer should evaluate the performance requirements and conditions that will affect the working life of the thermoplastic product. Where appropriate, field tests may need to be performed before the type of thermoplastic is selected. If the customers' quality assurance includes the testing of thermoplastic materials, the test criteria should specify the physical property of the ASTM specification that is most critical to its application. Polymer type alone may not be adequate for the selection of the thermoplastic that is best suited for a specific application. Buyer acknowledges the use of its own knowledge, expertise, skill, experience and judgment in the selection of products(s) and /or in the selection, provision, or designation of any specifications or set of specifications for a product(s) agreed upon by the Buyer and Seller. Buyer acknowledges that Seller shall not be liable for, and Buyer assumes all risk of, inaccurate or unsuitable specifications or information provided, selected or designed by the Buyer. RM BILTRITE™ LLC MAKES NO REPRESENTATIONS OR WARRANTIES WITH RESPECT TO THE SUITABILITY OF MATERIALS FOR A PARTICULAR PURPOSE. BUYERS AND USERS MUST DETERMINE THE SAFETY AND SUITABILITY OF RM BILTRITE™ LLC'S PRODUCTS FOR THEIR OWN PURPOSES, AND ASSUME ALL RISK, RESPONSIBILITY, AND LIABILITY FOR ALL INJURIES, LOSSES, OR DAMAGES ARISING FROM THE APPLICATION OF THE INFORMATION OR USE OF RM BILTRITE™ LLC'S PRODUCTS, WHETHER OR NOT CAUSED BY RM BILTRITE™ LLC'S NEGLIGENCE OR BASED ON STRICT PRODUCT LIABILITY. Terms and conditions are available upon request.