

## Tuff Trac® Switchboard Insulative Matting **BILTRITE®**

Corrugated and Diamond Patterns

**THERMOPLASTICS**



All Tuff Trac® Switchboard insulative matting undergoes dielectric testing and, as a matter of safety, significantly exceeds the recommended maximum use VAC

### Engineered with a substantially higher margin of safety performance

Tuff-Trac® ASTM matting is designed to insulate employees working on or in the vicinity of high voltage equipment by interrupting the electrical path to ground.

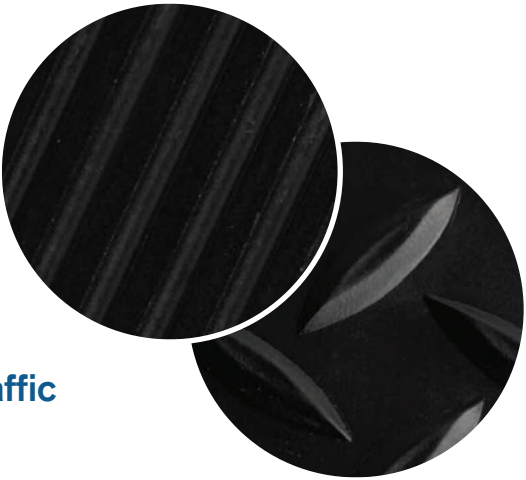
RM Biltrite™ has over forty years of Switchboard manufacturing experience in both rubber and vinyl. Our Tuff-Trac® Type II Class 2 formula was developed after years of testing experience showed that polymers enriched with functional additives would provide greater insulative resistance. We verify all Tuff-Trac® Type II Class 2 matting for dielectric resistance to 30,000 VAC per ASTM D-178. In addition, we perform extreme testing on every production batch to confirm our formula delivers a higher margin of safety up to 50,000 VAC.

Typical applications include power boards, electrical rooms, transformer stations, switching gear, bucket floors, mines, subways or any other high voltage workplace.

Tuff-Trac® Switchboard insulative matting is also available per military specification MIL-DTL-15562 and is currently used by the US Navy.



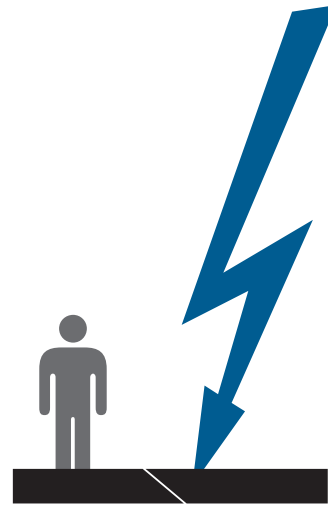
Tuff Trac® Switchboard Matting comes in corrugated and diamond embossed patterns and is available with an optional yellow safety edge where positive traffic control is required.



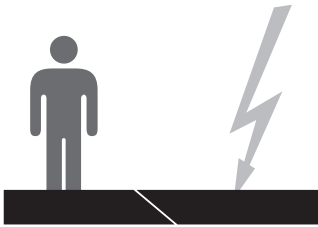
Tuff Trac® provides a significant margin of safety beyond standard use recommendations.

Tuff Trac® insulative matting is available in four thicknesses (Class 1, 2, 3 & 4), offering various levels of protection depending on the specific environment of intended use.

Type & Class	Thickness	<b>Dielectric Test Voltage</b>	<b>Recommended Max. use VAC</b>
Type II, Class 1	3/16" (.188")	20,000 VAC	7,500 VAC
Type II, Class 2	1/4" (.250")	30,000 VAC	17,000 VAC
Type II, Class 3	3/8" (.375")	40,000 VAC	26,500 VAC
Type II, Class 4	1/2" (.500")	50,000 VAC	36,000 VAC



Tuff Trac® Type II Switchboard  
Proof Tested to 50,000 volts.



Competitive brands  
failed beyond 30,000 volts.

Technical Data

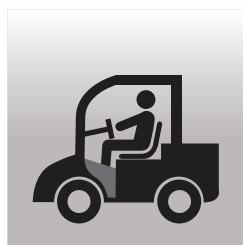
Product Characteristics		Test Method			
Application		Insulative	Insulative	Insulative	Insulative
Embossing	Face	Corrugated or Diamond Cloth	Corrugated or Diamond Cloth	Corrugated or Diamond Cloth	Corrugated or Diamond Cloth
Thickness	Back	3/16" (.188")	1/4" (.250")	3/8"(.375")	1/2"(.500")
Polymer Type	ASTM D178-01	PVC Type II, Class 1	PVC Type II, Class 2	PVC Type II, Class 3	PVC Type II, Class 4
Standard color		Black	Black	Black	Black
Specialty color		Optional	Optional	Optional	Optional
Safety Border		Optional	Optional	Optional	Optional
Physical Properties					
Tensile	ASTM D412	800 PSI	800 PSI	800 PSI	800 PSI
Elongation	ASTM D412	150%	150%	150%	150%
Flame Resistance	ASTM D178-01	0.50" max. after 30 seconds	0.50" max. after 30 seconds	0.50" max. after 30 seconds	0.50" max. after 30 seconds
Surface wear resistance	Taber, H-18 wheel/500 gr./1000 rev.	Good	Good	Good	Good
Dimensional stability/Layflat	ASTM D1204	Very Good	Very Good	Very Good	Very Good
Electrical Properties					
Dielectric Test Voltage	ASTM D178-01	20,000 VAC	30,000 VAC	40,000 VAC	50,000 VAC
Proof Tested Over Entire Surface	ASTM D178-01	10,000 VAC	20,000 VAC	30,000 VAC	40,000 VAC
Recommended Maximum Use VAC	ASTM D178-01	7,500 VAC	17,000 VAC	26,500 VAC	36,000 VAC
Weathering					
Ozone resistance	ASTM D178-01	Pass	Pass	Pass	Pass
Health & Safety					
Electrical Protection Matting		Personal Protective Equipment	Personal Protective Equipment	Personal Protective Equipment	Personal Protective Equipment



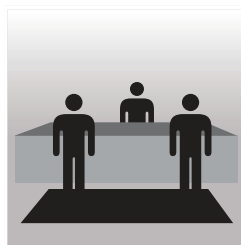
## Advancing the Technology and Chemistry of Thermoplastic Manufacturing



**BUILDING  
PRODUCTS**



**WEAR  
PROTECTION**



**MATTING**



**NOISE CONTROL**

**Ask about our full line of building maintenance products including  
Tuff Trac® Rooftop Walkway Products.**

Made in the USA by RM Biltrite™ LLC, a leading US manufacturer of engineered thermoplastic products including: building materials, specialty flooring and matting, noise attenuation, gasketing and other products with complex technical requirements.

**For more information and samples, contact your local distributor or a RM Biltrite™ representative at (800) 877-8775.**



© RM Biltrite, LLC 2018

The following are trademarks of RM Biltrite, LLC: RMBiltrite™, Biltrite®, Tuff Trac®

The following are trademarks of QRR, Inc: RubberMax™

There may be other trademarks of RM Biltrite or other companies noted in this document.

Distributed by: