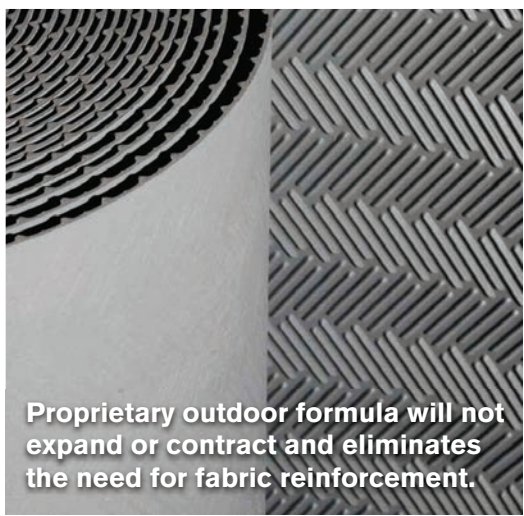
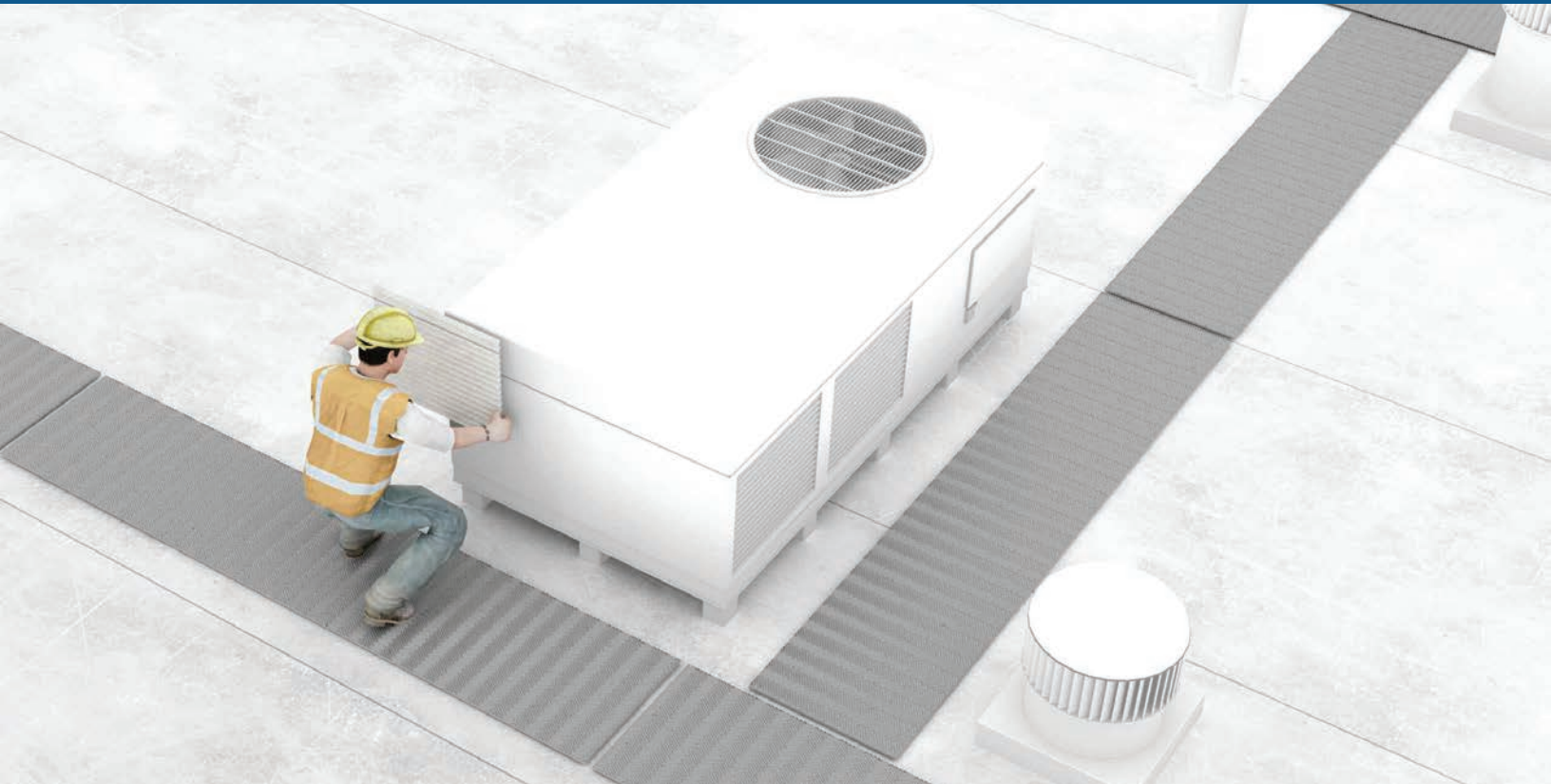


Tuff Trac® PVC Roof Walkway

Herringbone and Pyramid Patterns



Proprietary outdoor formula will not expand or contract and eliminates the need for fabric reinforcement.

Safe, Simple and Economical Rooftop Protection for Light and Heavy Traffic Areas

Tuff Trac® PVC roof walkway pads and runners protect roof membranes from damage caused by necessary foot traffic or accidental tool drops.

Heavy Traffic: Our Tuff Trac® PVC high profile, herringbone-embossed pattern is specified where frequent foot traffic is required, where there is increased risk of tool drops and/or equipment edges are expected.

Light Traffic: Our Tuff Trac® PVC low profile, pyramid-embossed pattern provides excellent non-slip protection over roof membranes where normal foot traffic is expected in order to service rooftop equipment or provide access to adjacent buildings.

Easy Rooftop Application

Tuff Trac® PVC roof walkway is compatible with single-ply PVC roof membranes and can be applied to new or existing roofs using standard hot air weld equipment.

Tuff Trac® PVC roof walkway is recommended for protection of PVC roof membrane in areas subjected to frequent foot traffic or maintenance.

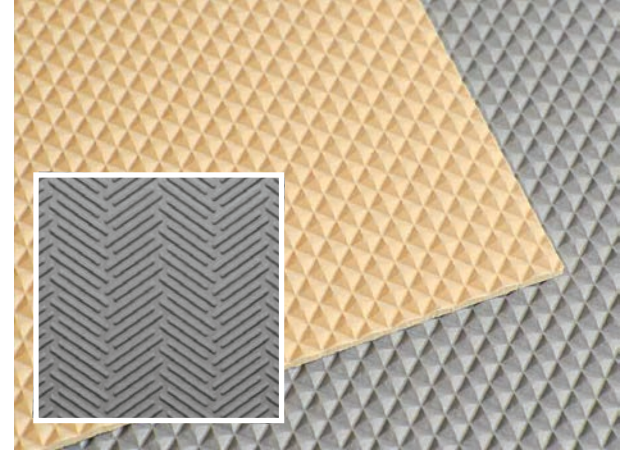
Intended Uses

Tuff Trac® PVC roof walkways are frequently used for:

- All access points (ladders, hatches, doorways) to the roof
- Protection near window washing equipment
- Around rooftop equipment that requires periodic maintenance

Installation

- Remove any loose debris and clean PVC roof membrane and allow to dry prior to application of walkway
- Roll out and cut desired length up to 10' (3.05 m) and allow to relax while placing into the desired position
- Install Tuff Trac® PVC roof walkway with a continuous weld around the perimeter



Heavy Traffic Herringbone embossed pattern available in Light Gray. Light Traffic Pyramid embossed pattern available in Light Gray (Tan as a special order.)

**Tuff Trac® PVC specifications –
Herringbone: Heavy Traffic and Pyramid: Light Traffic**

PACKAGING:

	HERRINGBONE Item #67-6701-25	PYRAMID #67-6701-23
Roll Size:	30" wide x 50' long (76 cm x 15.2 m)	36" wide x 60' long (91 cm x 18.3 m)
Roll Weight:	80 lbs. lbs. (36 kg)	115 lbs. (52 kg)
Color:	Light Gray	Light Gray or Tan
Thickness, in (mm):	.156" (4 mm)	.090" (2.3 mm)

STANDARD AND METRIC SPECIFICATION

TEST DESCRIPTION	TEST METHOD	STANDARD	STANDARD
Thickness, in (mm):	ASTM D 412	0.156" +/- 0.010" (4 mm +/- 0.025 mm)	0.090" +/- 0.010" (2.5 mm +/- 0.025 mm)
Tear Resistance, lbf/in (kN/m):	ASTM D 624	200 PPI (35 kN/m)	150 PPI (26.2 kN/m)
Elongation:	ASTM D 412	100%	200%
Dimensional Stability:	ASTM D 1204 (2hr, 158°F)	.25% (max change)	.25% (max change)
Accelerated Weathering:	ASTM G 155	Pass @ 5,000 hrs	Pass @ 5,000 hrs

LEED INFORMATION:

Pre-Consumer Recycled Content	65%	65%
Manufacturing Location:	Chelsea, MA	Chelsea, MA

Rev. April 2013

Made in the USA by RM Biltrite™ LLC, a leading US manufacturer of engineered thermoplastic products including: building materials, specialty flooring and matting, noise attenuation, gasketing and other products with complex technical requirements.

For more information and samples, contact your local distributor or a RM Biltrite™ representative at (800) 877-8775.



© RM Biltrite, LLC 2018
The following are trademarks of RM Biltrite, LLC: RMBiltrite™, Biltrite®, Tuff Trac®
The following are trademarks of QRR, Inc: RubberMax™
There may be other trademarks of RM Biltrite or other companies noted in this document.

Distributed by: